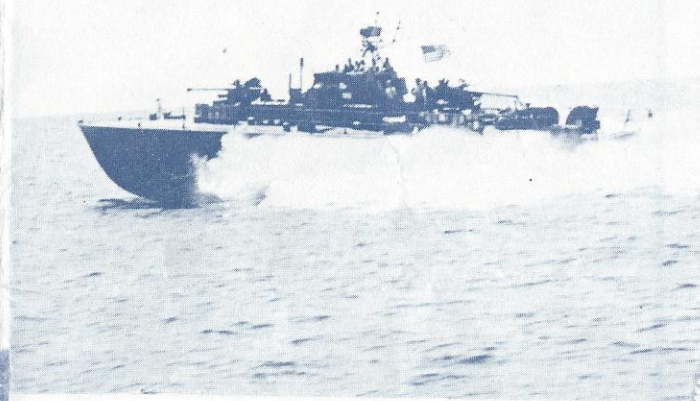


-PBR-

PATROL BOAT RIVER

This boat is 31 feet long, 11 feet wide, and displaces 8½ tons. Driven by two diesel engines which in turn drive water pumps instead of propellers, the PBR can exceed 30 knots in about 18 inches of water. A unique feature of the PBR is their ability to stop from full speed in about one boat length by reversing the pumps. They carry a crew of six enlisted and are armed with .50 cal. machine guns, a 40 MM grenade launcher, and some have a 60 MM mortar.



-PTF-

FAST PATROL BOAT

These boats are over 80 feet long, 24 feet wide and displace 80 tons. Their two 3100 HP diesel engines can provide speeds in excess of 43 knots, and a cruising range of up to 1050 miles. Their armament consists of an 81 MM mortar mounted with a .50 cal. machine gun and 40 MM and 20 MM mounts. They have a galley, heads, and sleeping accommodations for four officers and fourteen enlisted men.

-PCF-

PATROL CRAFT FAST

The PCF is 51 feet long, 13 feet wide and displaces 22 tons. Their two 960 HP diesel engines give the PCF a top speed in excess of 25 Knots. Armed with an 81 MM mortar, .50 cal. machine guns and a grenade launcher, the PCF provides a potent adaptation of the "Swift Boat" originally designed for support of off-shore oil drilling rigs. The PCF has six berths, a galley and head for it's crew of nine enlisted and two officers.

